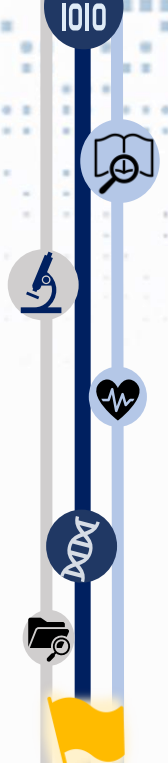


Discovering New Paths to Health Information

National Library of Medicine

MLA Conference

May 2024





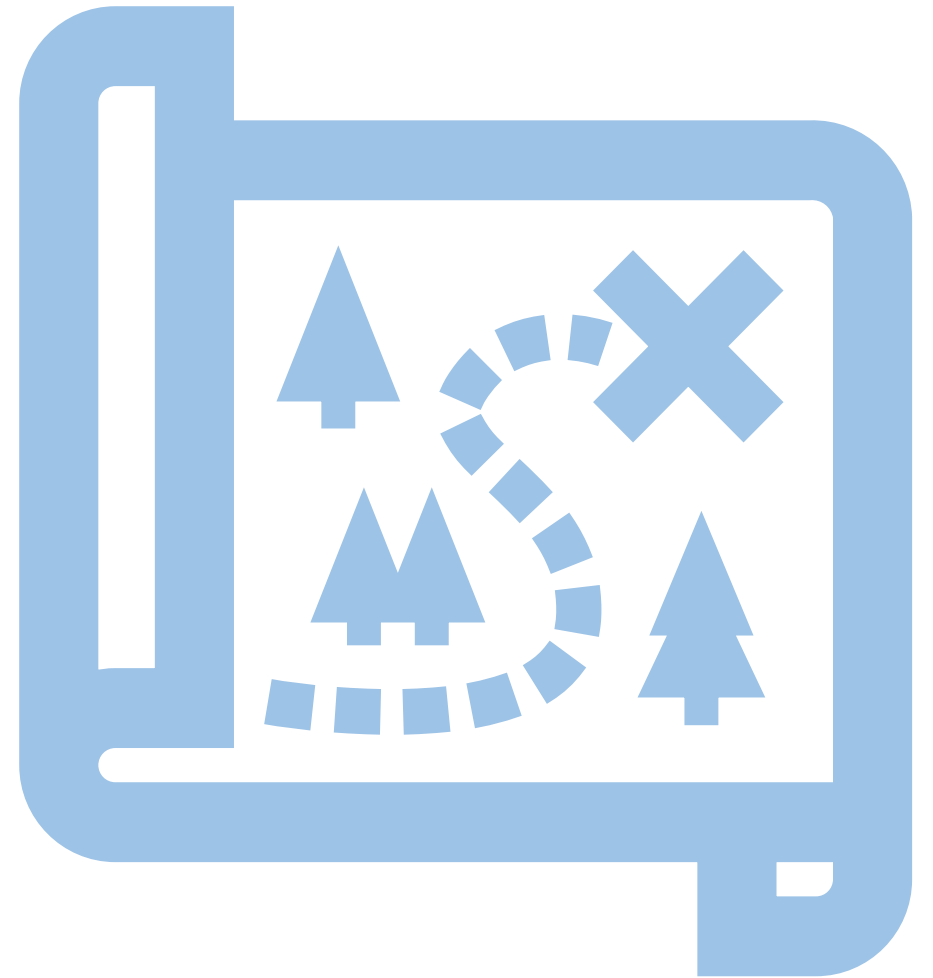
Dianne Babski

Director,
User Services and Collection Division



Agenda

- Introduction
- Updates NLM
- Updates from NNLM
- Discussion

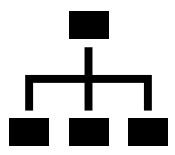


A wide-angle photograph of the National Library of Medicine building. The building is a large, modern structure with a prominent glass facade on the left side and a more solid, light-colored facade on the right. A tall, thin tower is visible on the left. In front of the building is a large green lawn with several cherry blossom trees in full bloom. An American flag is visible on a pole in front of the building. The sky is overcast.

What is the National Library of Medicine?

17th NIH Director, Dr. Monica Bertagnoli





NLM Org Structure

Dr. Steve Sherry
Acting NLM Dir



Office of the Director



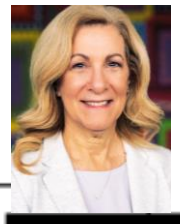
Executive Office



Computer Technologies



Strategic Initiatives



Communications



USCD



Extramural Research



LHC



NCBI



IRP

NLM Job Openings: <https://hr.nih.gov/jobs/search/executive/job-87536>

USAJobs: <https://www.usajobs.gov/>

Advice and Guidance from the Library Community

BoR Chair



Kristi Holmes,
Ph.D.
Northwestern
University

BoR Member



Phillip Walker,
MS, MLIS
Vanderbilt
University

BoR Member



Mary Mazanec,
MD, JD
Library of
Congress

BoR Member



Paul Wester, MLS
National
Agricultural
Library

LSTRC Member



Jonathan
Eldredge, Ph.D.
University of
New Mexico

BILDSRC Member



Charles Senteio,
Ph.D., MBA,
MSW
Rutgers
University

NIH Videocast: <https://videocast.nih.gov/>

NLM Associate Fellows 2023 - 2024



Alex Henigman



Ariaah Long



Kristi Torp



Julie Volpenhein

ALA/MLA/NLM Spectrum Scholars 2023 - 2024

Bernice Meja
University of North Carolina at Chapel Hill

Camryn "Cam" Burkins
University of Illinois – Urbana-Champaign



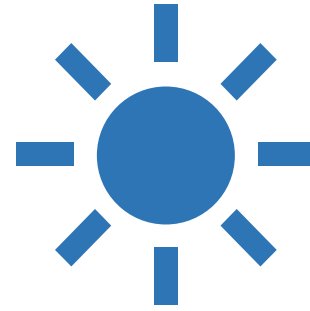
NLM Intramural Trainee Opportunities

Welcoming fellows in the NLM Data
Science and Informatics Scholar
Program

Musings from the Mezzanine:

<https://nlmdirector.nlm.nih.gov/2024/05/15/the-secret-to-research-trainee-success-hands-on-and-real-world-experiences-through-nlm/>





Strategic Plan & Vision

- Long Range Plan
- Reorganization from Library Operations (LO) to the User Services & Collection Division (USCD)

USCD Long Range Plan Goals

1

Goal 1: Create a Modernized Organizational Structure

- ✓ Reorganize into USCD Branches based on function



2

Goal 2: Unify Collections

- ✓ Documentation/ SOPs
- ✓ Analysis of workflows
- ✓ Assess workforce needs
- Monitoring/ alignment of repository tools
- Assess vendors, usage, and impact



3

Goal 3: Support and Promote the Use of Health Data Standards & Terminologies

- ✓ Establishment of the Health Data Standards Branch
- Selection of Health Data Standards Technical Lead



4

Goal 4: Provide Customer Experience (CX) Support

- Implementing CX strategy and roadmap recommendations



5

Goal 5: Know and Equitably Engage Our Users

- Additional and enhanced collaboration opportunities with engagement staff
- Innovative engagement methods



From LO to USCD – What We Do

Collect

Acquire and preserve unique and trusted collection of biomedical information



Connect

Link our global audience to biomedical data and resources to make informed health decisions



Curate

Make biomedical information findable through data normalization, metadata and data standards



1010
1010



2024

USCD Overview

Mission

("What")

Collect, curate, and connect the world to scholarly biomedical literature, health information and data resources

Vision

("Impact")

Empower scientists and society to use credible, equitable, and accessible biomedical information to improve global health

1010
1010



USCD Branch Descriptions

Collections (Collect)

Selects, acquires, and preserves biomedical resources in all formats

Discovery (Curate)

Describes, indexes, and curates the NLM collections and other trusted health information, data, and resources

Health Data Standards (Curate)

Develops, maintains, and distributes health data standards and terminologies products and services

Engagement (Connect)

Provides access to and fosters engagement with NLM collections, data, standards, and resources

Division **User Services and Collection Division (USCD)**

Office of the Director (OD)
 Director of USCD – Dianne Babski
 Deputy Director of USCD – Amanda Wilson
 Senior Historian – Jeffrey Reznick
 Senior Administrative Officer – Deborah Lockett-Jordan

NICHSR

LSTRC

Branches (4) Branch Chief Deputy Branch Chief	Collection Margaret McGhee Beth Weston	Health Data Standards (HDS) TBD TBD	Discovery Tina Shrader (Acting) Jennifer Diffin (Acting)	Engagement Stacey Arnesen Ken Koyle
	Programs (10) Program Managers	Collection Development Julie Silverman Collection Management Laura Hartman (Acting) Digitization TBD	Controlled Vocabulary Services Carlo Nuss (Acting) Terminology Services Patrick McLaughlin	Data Applications & Systems Jennifer Diffin Health Information Lisa Mohammed Metadata Management Barbara Bushman (Acting)



Product & Services Update

- Dataset Tools
- Literature Products
- Collection Development



Overview: Dataset Catalog

PubMed of
Datasets!!

WHAT

- A catalog of biomedical datasets from selected publicly available repositories.

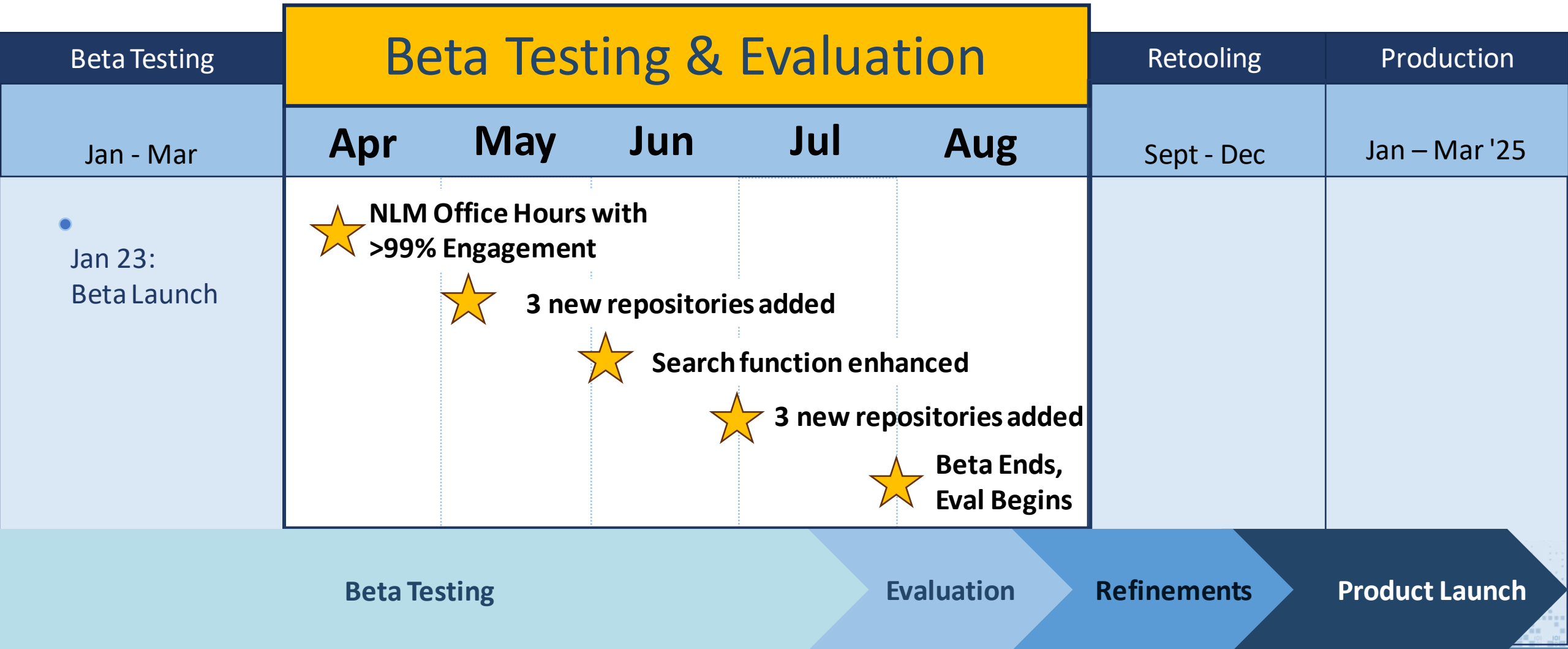
WHY

- Provide discovery systems for users, as stated in [NIH Strategic Plan for Data Science](#) and [NLM 2017-2027 Strategic Plan](#).
- Allow researchers to discover biomedical datasets from many repositories.
- Drive adoption and acceptance of the NLM standard - DATaset Metadata Model (DATMM).

HOW

- Launch a beta version of Dataset Catalog using DATMM:
 - Assess Usage, Scalability and Sustainability of Dataset Catalog
 - Receiving user feedback to drive further development
 - Drive interest and adoption of DATMM

Dataset Catalog Timeline



Center for Clinical Observational Investigations (CCOI)

Clinical
Datasets
Concierge

RESEARCH NEEDS

Large clinical datasets are an essential resource for biomedical research as they can allow for greater strength and reliability in findings and may reduce the need for some traditional research trials.



CCOI MISSION

To reduce barriers to finding and evaluating for use relevant **clinical datasets** by providing a curated metadata profile.

CCOI Project Phases

Phase I: Data Curation and Needs Assessment (FY 24)

- Initial group of dataset profiles developed
- Semi-structured interviews with NIH intramural researchers of varying levels of experience and areas of research
- Incorporate feedback

Phase II: CCOI Dataset Profiles Enhancement (FY 24 & FY25)

- Introduce new functionalities (e.g., querying/filter, data visualization)
- Identify and curate dataset profiles for new datasets (e.g., rare diseases and health equity-related datasets)

Phase III: Evaluation & Future Planning (FY 25 & beyond)

- Assess use of CCOI Dataset Profiles and continuously monitor feedback for future improvements
- Provide Data Science and Analytic services (NIH)

Dataset Catalog and CCOI Dataset Profiles

Dataset Catalog	CCOI
-----------------	------

Scope

Datasets	Original research datasets	General purpose data collected during the care process
Domain	All research (including basic biological & animal research)	Clinical data
Origin of dataset	Scientific research	EHR, claims, EMS

Functionality

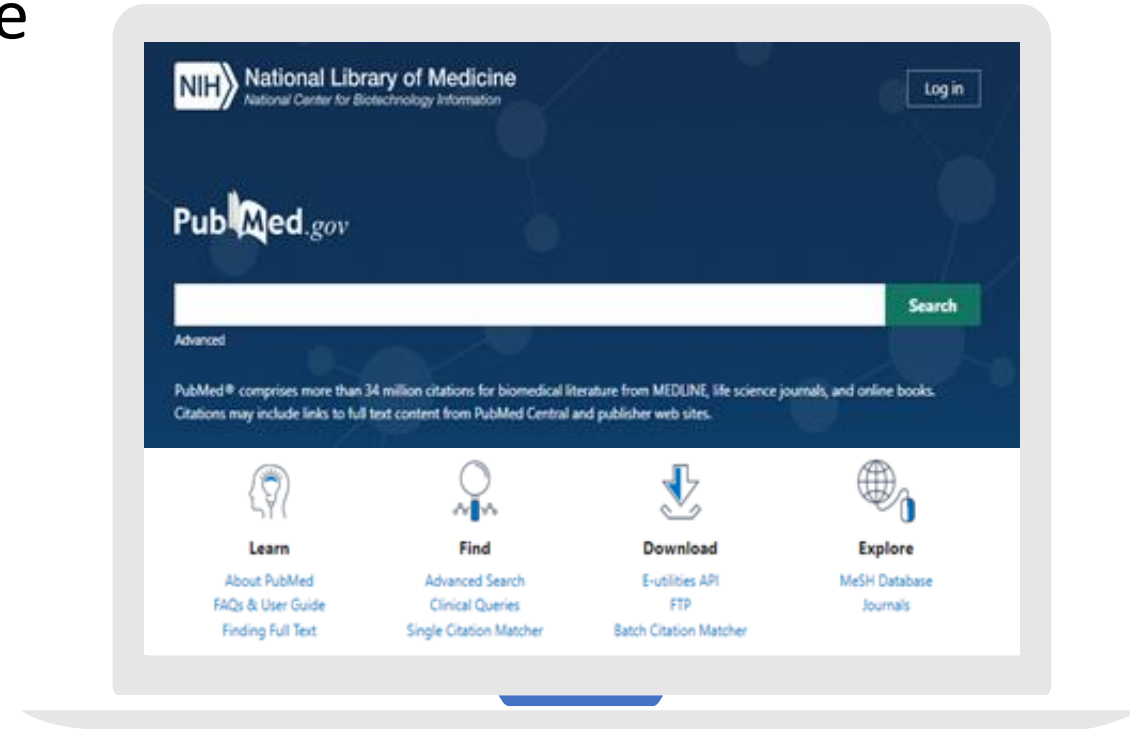
Main value	Make datasets findable	In-depth characterization of datasets
Goal	<ul style="list-style-type: none"> • Link to source website, • Data reuse • Accelerate scientific discovery 	<ul style="list-style-type: none"> • Determine suitability to answer specific clinical questions, • Data reuse, • Improve clinical decisions and outcomes
Additional Services	<ul style="list-style-type: none"> • Gradual addition of repositories • Improved search • Programmatic API endpoint 	(Future) NIH Intramural assisted data analysis, statistical consultation, research partnership
Size	76,826 datasets (5/15/2024), 5 repositories	4 international clinical datasets, ~384,000,000 cases spanning 70 years

PubMed Updates

- Proximity searching now available in the Affiliation field
- Wildcard searching
- New improved MEDLINE indexing algorithm - MTIX

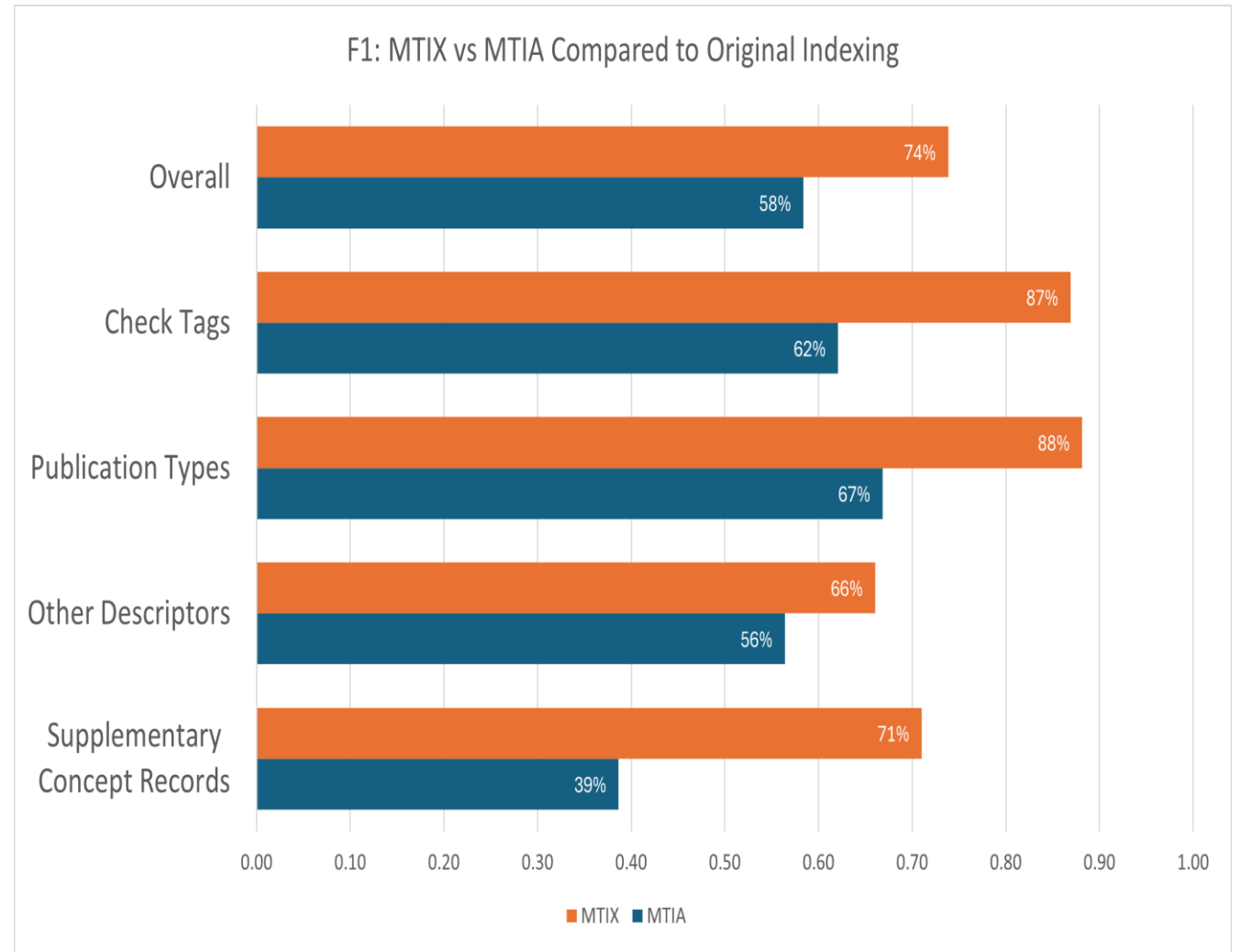
Please send us your feedback!

Write to the PubMed team via the NLM Help Desk: <https://support.nlm.nih.gov/>



PubMed Update

MTIX (Medical Text Indexer-NeXt Generation) for MEDLINE



PubMed Office Hours

June 11, 2024

1:00 PM – 2:00 PM EDT



<https://www.nlm.gov/training/class/nlm-office-hours-pubmed-1>

PubMed Central (PMC) Update

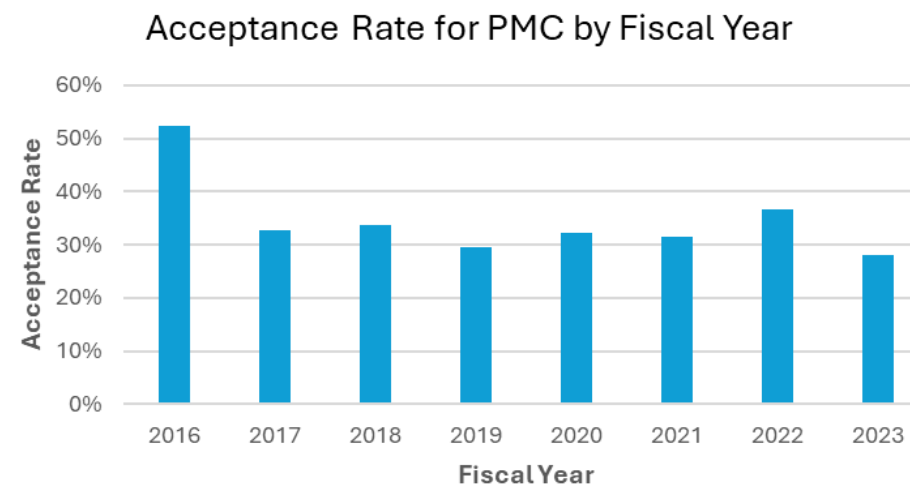
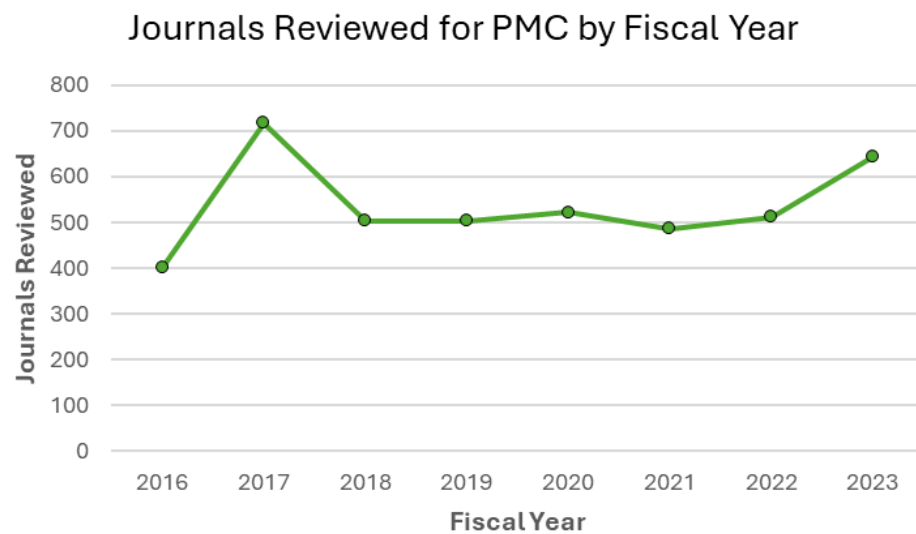
Preview updates to the PMC website rolling out in October 2024 – available now!

- Updated article display with easy-to-access navigation
- Reimagined PMC Journal List with filters

Send your feedback!



PMC Update



PMC Update: NIH Preprint Pilot

- More than 20,000 NIH-supported preprints indexed to date
- Continue to monitor and assess the impact of this work on
 - discovery of NIH research
 - user trust
 - NLM workflows
 - author open science practices

Home > News, Events, and Updates

News, Events, and Updates

NIH Preprint Pilot Accelerates and Expands Discovery of Research Results

The NIH Preprint Pilot has accelerated and expanded broad discovery of NIH-funded research results relating to the SARS-CoV-2 virus and COVID-19.

[Read more](#)

ClinicalTrials.gov Modernization

Strategic Goals:



Improve the user experience



Upgrade the technical infrastructure and processes to enhance sustainability



Support the existing legal, regulatory, and policy framework

Vision:

Ensure ClinicalTrials.gov continues to be a trusted and valued premier public health resource that provides maximum value to the public and serves its mission well into the future.

ClinicalTrials.gov Modernization Timeline



YEAR 1

Initial Engagement Activities

- Engaged stakeholders to determine and validate approach and specifications
- Enhanced internal business processes
- Developed modernization roadmap



YEAR 2

Development

- Developed new product experiences
- **Launched first release of ClinicalTrials.gov Beta**
- Communicated availability of the beta release to stakeholders



YEAR 3

Implementation

- **Launched first release of Protocol Registration and Results System (PRS) Beta and released updates**
- Conducted usability research and made iterative improvements to the beta sites



YEAR 4

More Releases and Refinements

- Launched the modernized ClinicalTrials.gov website
- Released PRS Beta protocol registration



Where we are now

YEAR 5

Launches and Landings

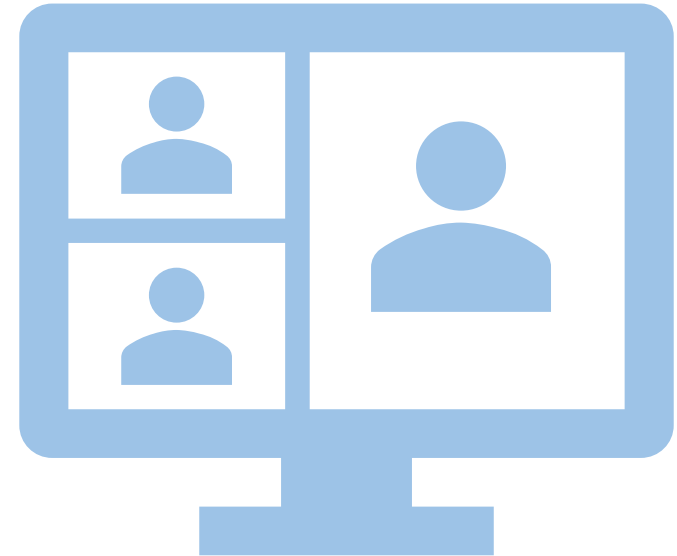
- Build and release the PRS Beta results reporting components
- Continue engagement, making updates and refinements
- **Retire Classic ClinicalTrials.gov June 25, 2024**
- **Launch the modernized PRS**

ClinicalTrials.gov Modernization Event

**Free NLM Webinar:
Join us on June 6, 2024, at 1-1:45 p.m. ET.**

ClinicalTrials.gov Staff will:

- Share an update on the overall modernization effort,
- Highlight features of the modernized website, and
- Help users prepare for the retirement of the classic ClinicalTrials.gov.



NIH Comparative Genomics Resource (CGR)

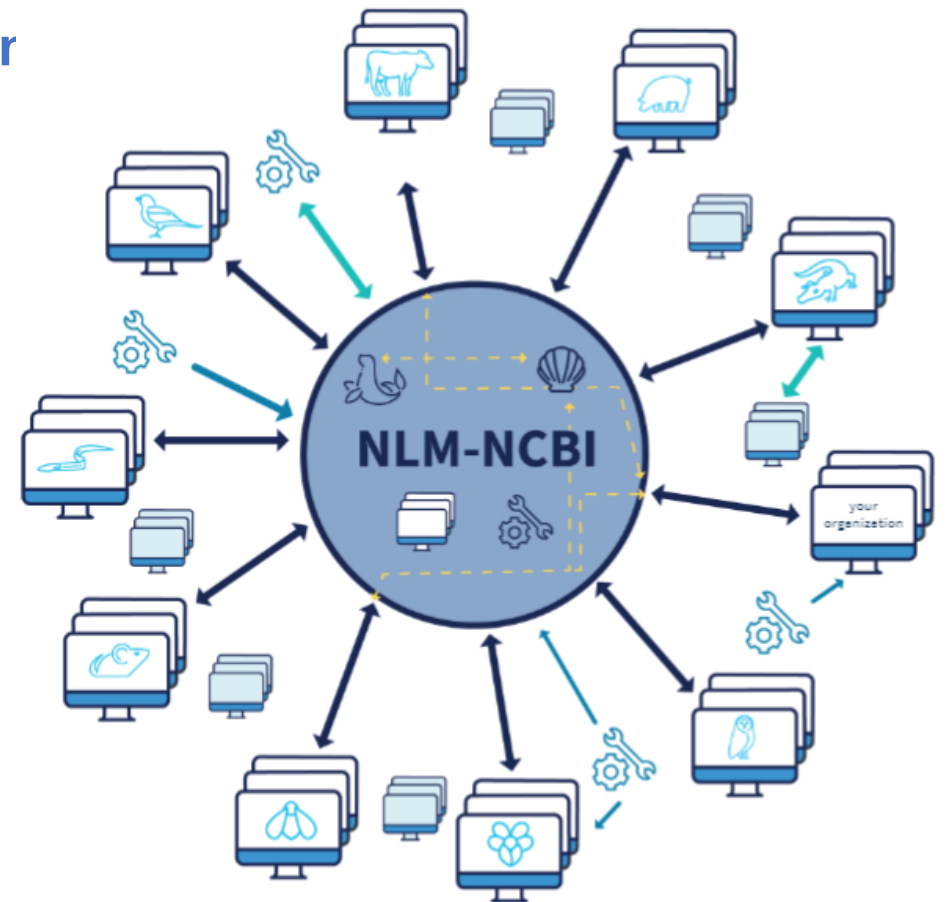
Maximize the impact of eukaryotic research orgar and their genomic data to biomedical research

CGR provides:

- ✓ High Quality Genomic Data
- ✓ New and Improved Comparative Genomics Tools
- ✓ Community Collaboration and Connection

CGR enables:

- ✓ Scalable Analysis
- ✓ New Discovery Amplification
- ✓ Scientific Advancement



MedlinePlus Update

- Review and update of unique content
 - 100 Health Topic summaries
 - 100 Medical Test monographs
 - 140 Genetic Conditions, Genes, and Chromosomes pages
- New features
 - 60 Test Your Knowledge Quizzes
 - Evaluating Internet Health Information Tutorial
- Maintenance
 - 8597 links to trusted health information



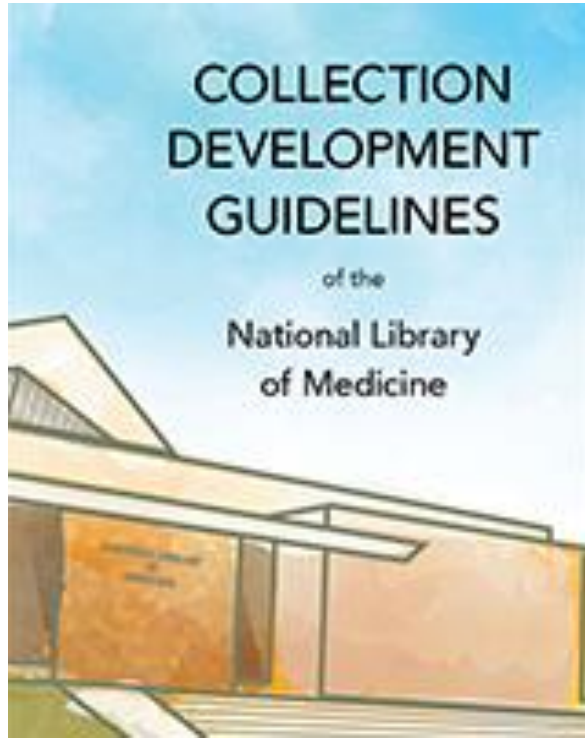
DOCLINE Update



- DOCLINE move to the cloud
- Library group managing their own groups
- Updated reports to provide options for PDF and Excel
- 13-month access activity summaries reports

DOCLINE Release Notes: www.nlm.nih.gov/docline/support/releases.html

Collection Development Update



- All selection and acquisition work for the collection has been consolidated into one program area, regardless of age or format of the material.
- Updates to the Collection Development Guidelines
 - Datasets
 - Drafts
 - NLM Retention Policy

NLM Collection Development Guidelines: <https://www.ncbi.nlm.nih.gov/books/NBK518693/>

YEAR OF **OPEN SCIENCE**



Government Initiatives

- Women's Health Initiative
- Open Science



Open Science



[Administration](#) [Priorities](#) [The Record](#) [Bri](#)

JANUARY 11, 2023

FACT SHEET: Biden-Harris Administration Announces New Actions to Advance Open and Equitable Research

[OSTP](#) [NEWS & UPDATES](#) [PRESS RELEASES](#)

OSTP launches Year of Open Science to advance national open science policies across the federal government in 2023

An official website of the United States government [Here's how you know](#)



[About Science.gov](#) [Open Science & Public Access](#) [Scientific Integrity](#)

Search for authoritative federal science information



[Advanced Search](#)

Open Science Announcements from Federal Agencies

Open Science is the principle and practice of making research products and processes available to all, while respecting diverse cultures, maintaining security and privacy, and fostering collaborations, reproducibility, and equity.

Federal agencies are celebrating 2023 as a Year of Open Science, a multi-agency initiative across the federal government to spark change and inspire open science engagement through events and activities that will advance adoption of open, equitable, and secure science.

Help spotlight the value of open science by checking out this [toolkit](#): choose and use images for social media, presentations, posters and virtual backgrounds—agency partners may even co-brand. #YearofOpenScience.

- | | |
|---|---|
| Centers for Disease Control and Prevention | National Institutes of Health |
| Department of Agriculture | National Institute of Standards and Technology |
| Department of Commerce | National Oceanic and Atmospheric Administration |
| Department of Energy | National Science Foundation |
| Department of State | Smithsonian Institution |
| Department of Transportation | U.S. Geological Survey |
| Environmental Protection Agency | U.S. General Services Administration |
| National Aeronautics and Space Administration | White House Office of Science and Technology Policy |
| National Endowment for the Humanities | |



Open Science

OFFICIAL DEFINITION:

The principle and practice of making research products and processes available to all, while respecting diverse cultures, maintaining security and privacy, and fostering collaborations, reproducibility, and equity.

Open Science



Learn more at Musings from the Mezzanine

Lowering Barriers, Fostering Discovery: How NLM is Supporting A Year of Open Science

Posted on August 30, 2023 by Guest Author



Guest post by colleagues at NLM's Lister Hill National Center for Biomedical Communications (LHNCBC).

A Year of Open Science, A Lifetime Commitment for NLM

Posted on July 26, 2023 by Guest Author



Guest post by Lisa Federer, PhD, Acting Director of the Office of Strategic Initiatives, National Library of Medicine (NLM).

Women's Health

Key areas of support and advancement:

- Prioritize and Increase Investments in Women's Health Research
- Foster Innovation and Discovery in Women's Health
- Expand and Leverage Data Collection and Analysis Related to Women's Health
- Strengthen Coordination, Infrastructure, and Training to Support Women's Health Research
- Improve Women's Health Across the Lifespan

WH.GOV



MARCH 18, 2024

Executive Order on Advancing Women's Health Research and Innovation



BRIEFING ROOM

PRESIDENTIAL ACTIONS

Women's Health Initiative

How will NLM be contributing?

Delivering a federated information ecosystem for women's health information to be organized and accessible





AI @ NLM

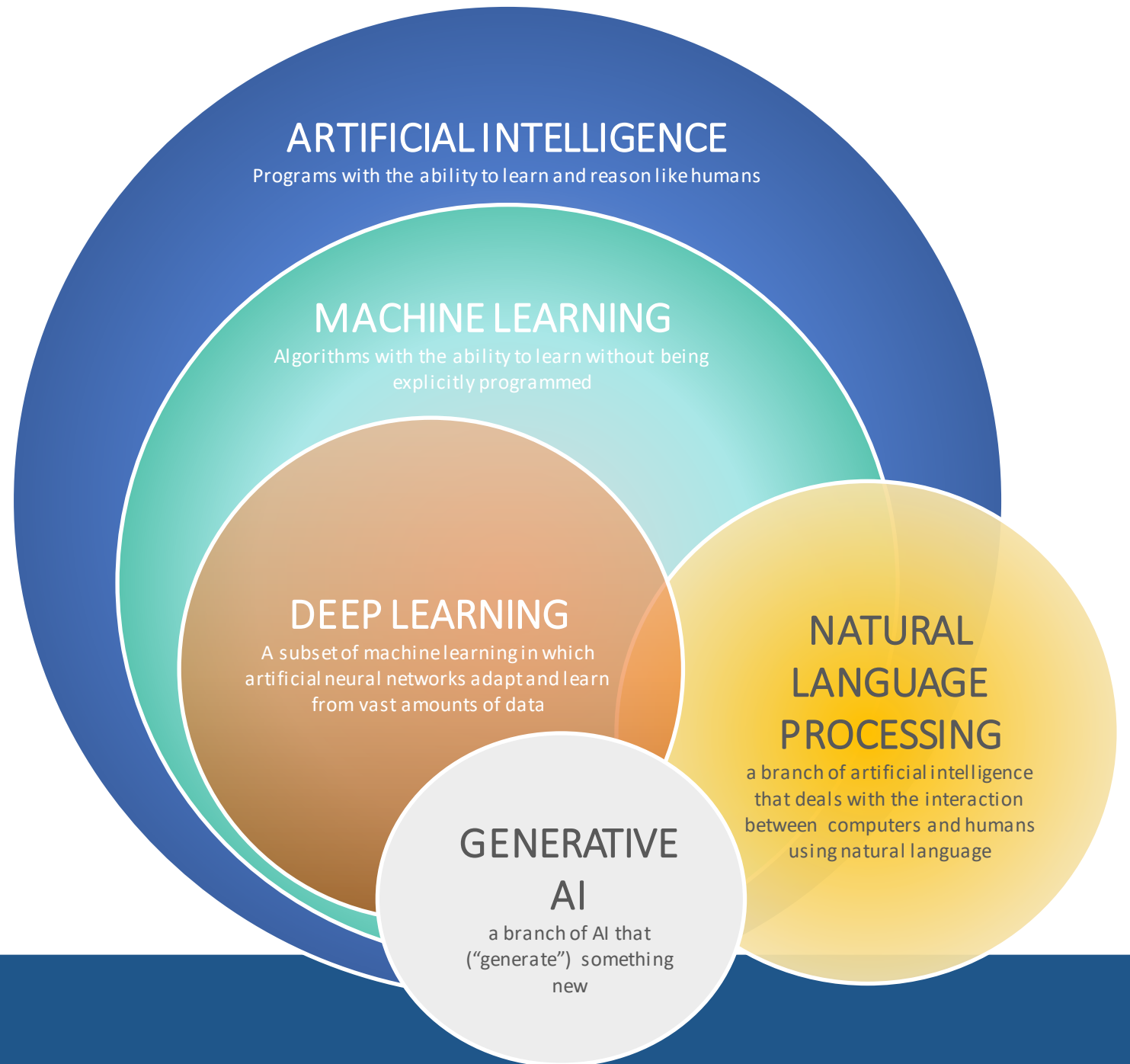
- Background
- GenAI in the Scientific Landscape
- Community of Practice
- Pilot Update





Artificial Intelligence Defined

A key building block of an AI system is the ability to learn from large datasets.



How We Got Here

BD2K

2010s:
Big data & advances
in hardware enable
breakthroughs in AI
research.



Early 2020s:
OpenAI, Google,
Microsoft, Meta and
Latimer make a splash
with Gen AI products.

NLM GenAI
Pilot

MTI

PMC

2000s:
Smartphones
connect to the
internet.



PubMed

1990s:
The public surfs
web browsers.



1010
1010

2025

GenAI Pilot Goals



Experiment and develop best practices for LLMs in Azure’s “playground” (safe zone)



Create a proof of concept that applies to NLM work



Measure results to ensure utility and safety (NIST)



Develop workforce skills in Generative AI

Use Cases (10)



NLM GEN AI

2023 - 24 Pilot

**Responsive
Customer Service**

**Operational
Process Efficiency**

**Summarization
and Analysis**

**Clinical Support
Assistance**

Classification and Web Accessibility



Customer Response



Product Knowledge Insights



IT Programming Tasks



Metadata Retrieval and Transformation



UMLS Edit Support



Data Viz and Segmentation



EP Grant Portfolio Analysis



Network Analysis



Research and Development: TrialGPT





GenAI Pilot Impact

Cohort Logistics

10 Use Cases

15 Pilot Participants



Participant/ Technical Support

~300 One-on-one Consults

~30 Office Hours



Communications

35 Demos

6 NLM/NIH Leadership Briefings, NLM Town Hall, Board of Regents, NLM Insider

3 External Publications



NIH GenAI Community of Practice

Vision and Goals

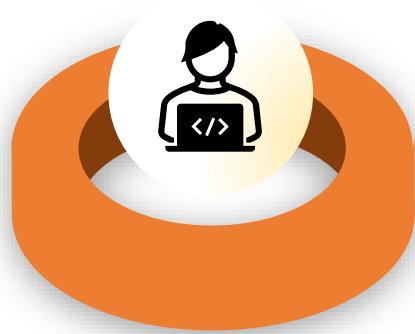
- Harness the potential of GenAI across NIH to enable biomedical research discoveries and accelerate NIH business operations
- Serve as the nexus for GenAI coordination, innovation, and deployment across the NIH community
- Encourage, test, support, and scale GenAI adoption at NIH



Lessons Learned from GenAI Pilot

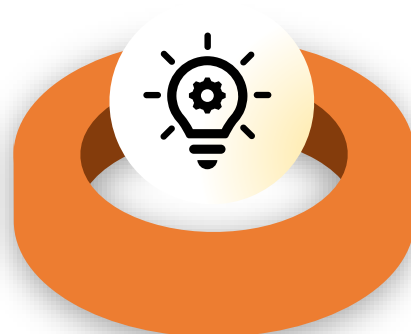


Importance of Technical Support



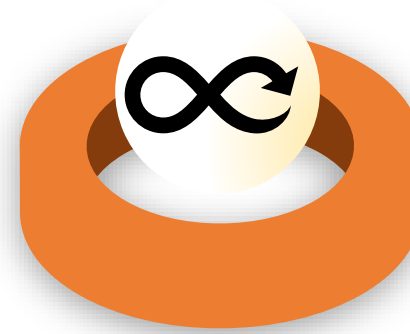
Field is embryonic and dynamic so robust, 1:1 technical support and training resources mitigates challenges in technology adoption and implementation.

Value of Collaboration and Networking



Cohort collaboration, knowledge sharing, and networking facilitated problem-solving and idea generation, and a more enriching learning experience.

Standardized Project Mmgt. Resources



Rapid, iterative innovation needs SOP creation and project management tools to help address issues related to access, resource allocation, and technical resolution.

Human-in-The-Loop Design



To automate pieces of workflows, we need to design and plan for human monitoring of certain checkpoints in accuracy and ethics.

Why Support this Work?

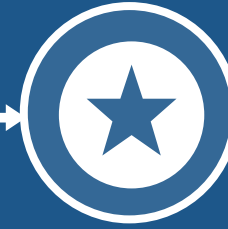
Drives Mission

Future-forward visioning and responsible use of emergent technologies is essential for NLM>NIH to achieve its mission and drive national competitiveness.



Trusted Reputation

NLM has a reputation for providing *trusted* and *well-structured* biomedical standards, computational research, and leading science for the public globally.



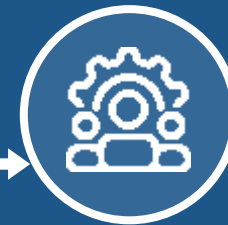
Curation Expertise

NLM has a rich, large, highly curated repository of information and domain data ideal for secure GenAI.



Workforce Capacity

Humans-in-the-loop verification is essential to sustain internal workforce capability and trustworthy products and services.



NIH's Vision for NLM

Connect research to primary care to optimize outcomes for patients



Meet people where they already receive care to better engage underrepresented communities.



Use EHR to engage people in research with their permission.



Increase research capabilities and efficiency with innovative study designs that address common health issues, prevention and implementation.



Rapidly disseminate evidence to guide patient and provider decisions.

Expand biomedical research data use to inform new research and improve health outcomes



Integrate data from basic and social science research, public health, and clinical care.



Increase capacity for data hosting, Enable low-cost access to data using open-industry data standards, Support broad access to advanced analytics and computational power.



Employ a federated architecture for data sharing and use.



Provide education and workforce development.

“In order to make the best use of this influx of data, I hope to make **NLM a revitalized hub for expanded biomedical data, research data, use**, not just data sharing, not just data storage, but focus on data use, that is able to inform new research and improve health outcomes.”

“...**get the right data in the hand of people asking important questions, integrate data** from basic and social science research public health and clinical care...”

Long-term Vision: Connecting Everyone with Customized Health Information



User asking a health or medicine-related question and/or entering a search query to a user interface.



Synthesized knowledge coming back to the user.



NLM Strategic Plan



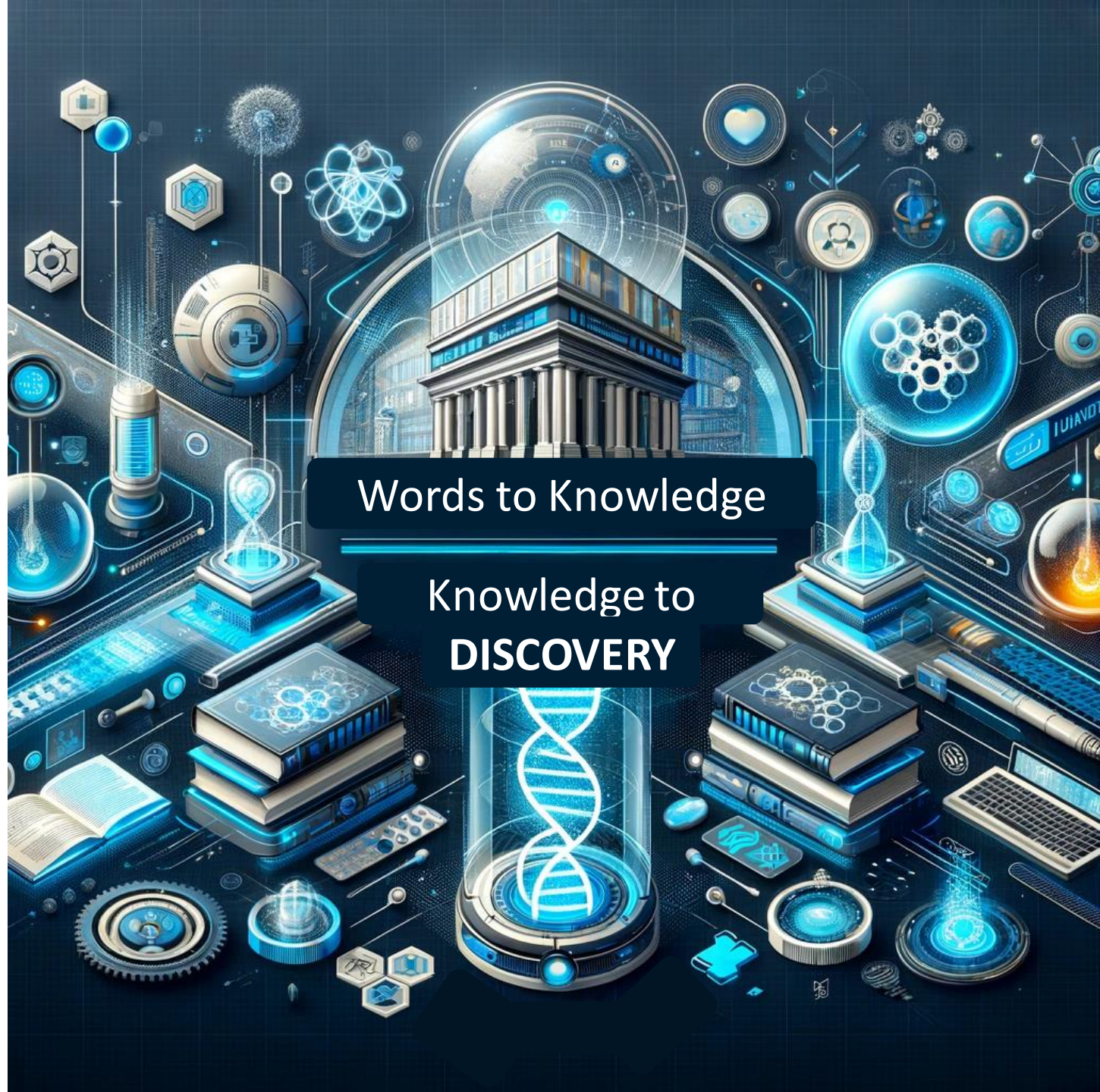
Accelerate discovery and advance health through data-driven research



Reach more people in more ways through enhanced dissemination and engagement



Build a workforce for data-driven research and health



Words to Knowledge

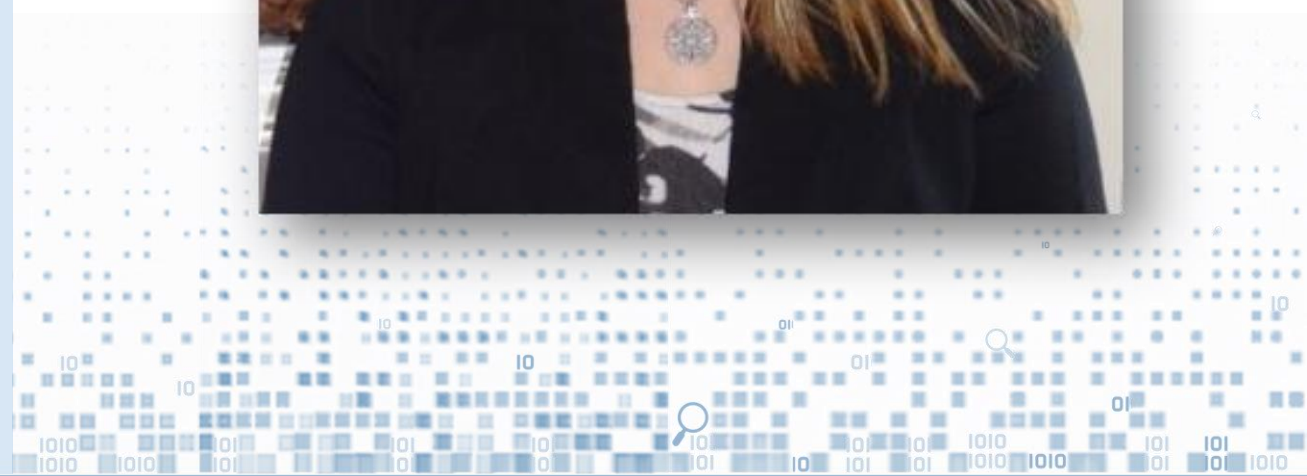
**Knowledge to
DISCOVERY**



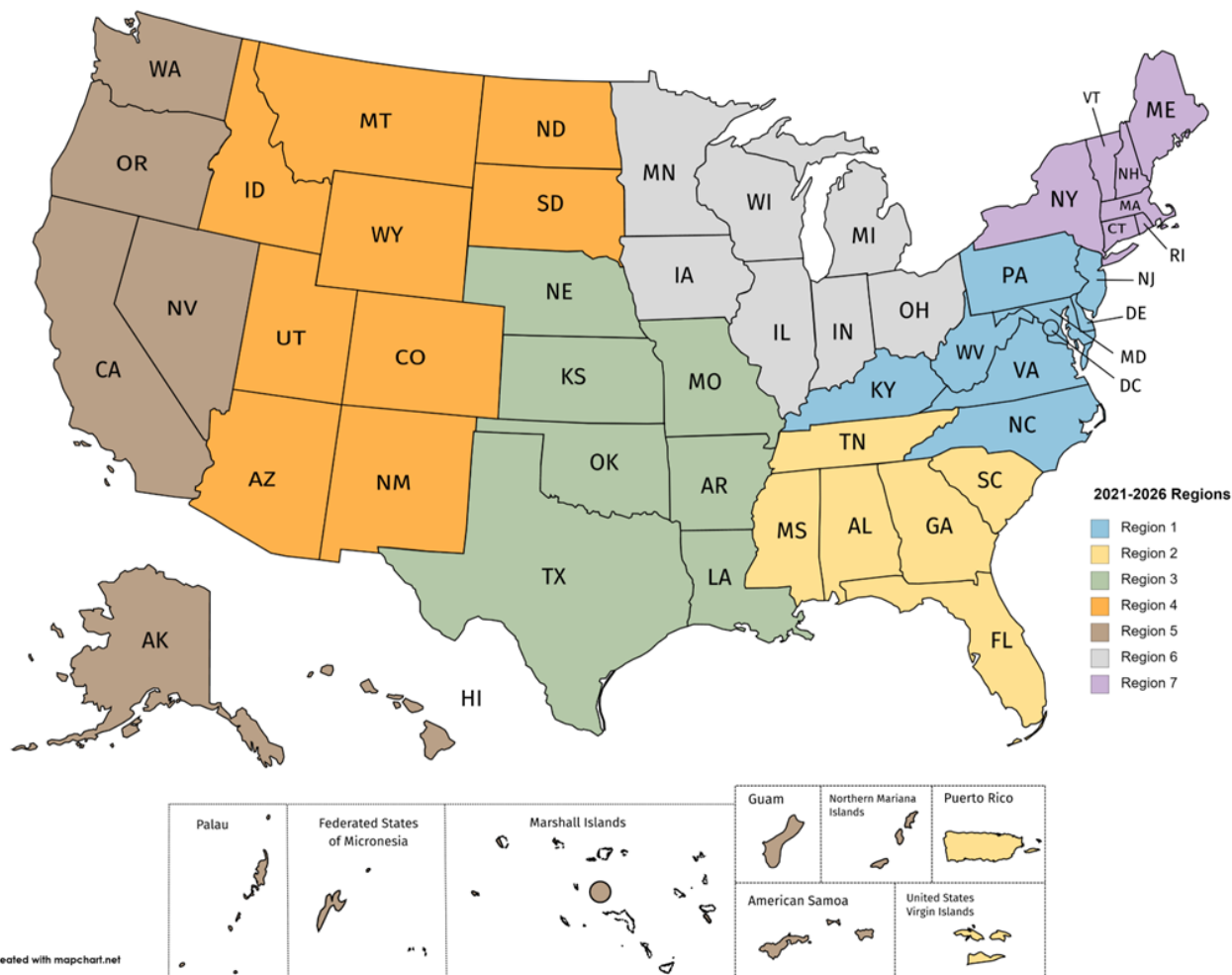
Martha Meacham

Project Director, Network of the
National Library of Medicine

Martha.Meacham@nih.gov



Network of the National Library of Medicine (NNLM)



Regional Medical Libraries

Region 1 - University of Maryland, Baltimore

Region 2 - Medical University of South Carolina

Region 3 - University of North Texas Health Science Center

Region 4 - University of Utah

Region 5 - University of Washington

Region 6 - University of Iowa

Region 7 - University of Massachusetts Medical School

Coordinating Offices / Centers

NNLM Web Services Office (NWSO)

NNLM Training Office (NTO)

NNLM Public Health Coordination Office (NPHCO)

NNLM Center for Data Services (NCDS)

NNLM Evaluation Center (NEC) - Northwestern

NNLM *All of Us* Program Center (NAPC) – UIowa & UPitt

Training

Year 3 (May 2023 – April 2024)

- NNLM.gov/training
- 30,000+ registrations
- 230+ classes
- Total MLA CE Credits Offered: 564
- NNLM YouTube - <https://www.youtube.com/c/NnImGov>



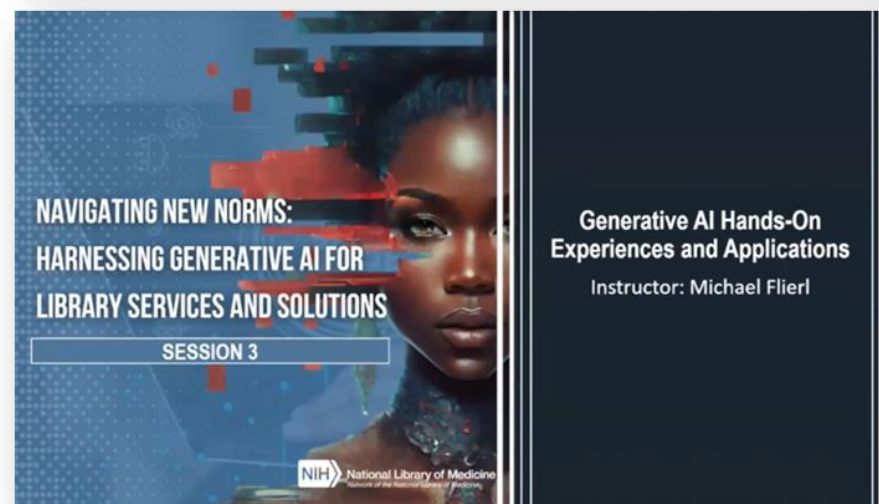
I have found the trainings I've attended over the past two years to be a remarkable resource in updating my skills and introducing me to current issues in medical librarianship. With each training and patron interaction, I feel better equipped to connect patients with reliable health information. Thank you for offering this caliber of training. - From NEC Follow-up Training Survey

Data & AI

- MLA Data Science Specialization
- Data Pathways (<https://www.nlm.gov/guides/data-pathways>)
- Fundamentals of Data Science Course
- AI and Libraries
- NCDS Data Internship



NNLM FUNDAMENTALS OF HEALTH DATA SCIENCE



"The speakers offered a fascinating overview/update and analysis of all things AI for those in healthcare, education and libraries. It was the best one I've seen so far on the topic of AI and libraries." - The Future Will See You Now: AI for Healthcare, A Library's Perspective, hosted by Brandon Kennedy, R3

Student Engagement

- Internships
- Professional Development
- Alternative Spring Break
- Work with LIS/iSchools
- LIS Students receiving CHIS



“This internship kept me focused on health librarianship during my last semester of school. My school didn't have a health sciences emphasis, so this internship gave me much needed experience. I learned a lot about the social determinants of health, health data, and where to find health data. Then compiled the data for a single county and presented it in the Community Guide to Advance Health Information Equity.” Annisija Hunter, MLIS student at the University of Missouri

...And More

- Funding
- Rural and Tribal
- Skills for Health Science Librarians
- Telehealth -> Digital Health
- Traveling Exhibitions
- Evaluation



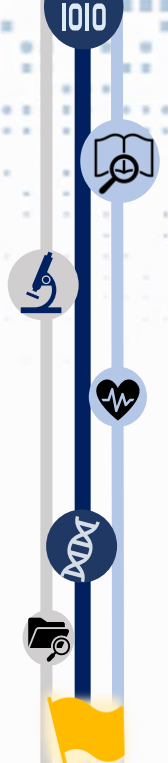
NNLM Discovery Podcast
NNLM.gov/Podcast

"It was fantastic to see a project of this kind where an indigenous researcher went into the community and performed research with a cultural understanding of the population." - Developing, implementing, and evaluating a mixed-methods community-based participatory research sleep intervention, hosted by Carolyn Martin, R5

Stay Connected!

NNLM serves a primary link to NLM
Multi-directional communications
We want to hear and learn from you

NNLM Staff Directory - <https://www.nlm.gov/about/staff-directory>
NLM – Write the Help Desk - <https://support.nlm.nih.gov/>



National Library of Medicine

Thank you, MLA!

